

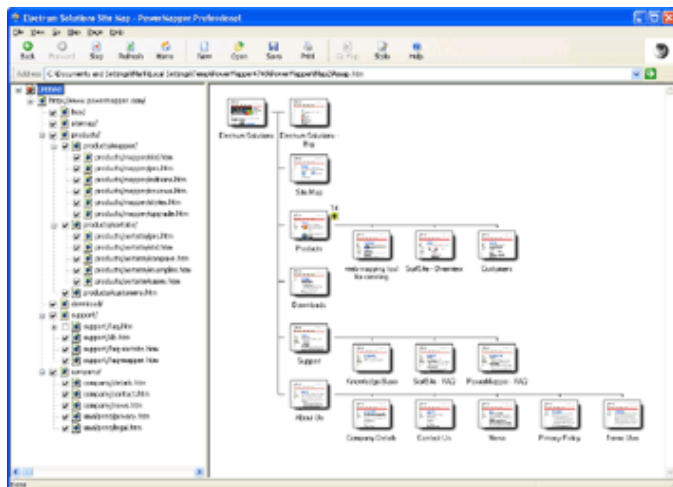


PowerMapper

one-click site mapping

PowerMapper One click site mapping

PowerMapper is an automatic site map creation tool for information architects, usability analysts and web developers. It is used in 43 countries, by over 30% of the Fortune 100, and major organizations like NASA and MIT.



Benefits

- **One click site mapping**
Creating a map is simple: just navigate to your site using the built in web browser, then click New.
- **Multiple map styles**
PowerMapper draws maps in a range of useful and attractive styles using thumbnails of each page.
- **Produce Printed Maps**
PowerMapper Professional edition features map styles that print across multiple pages, allowing whiteboard sized maps of large web sites.

Map Style

Electrum

Isometric

Skyscrapers

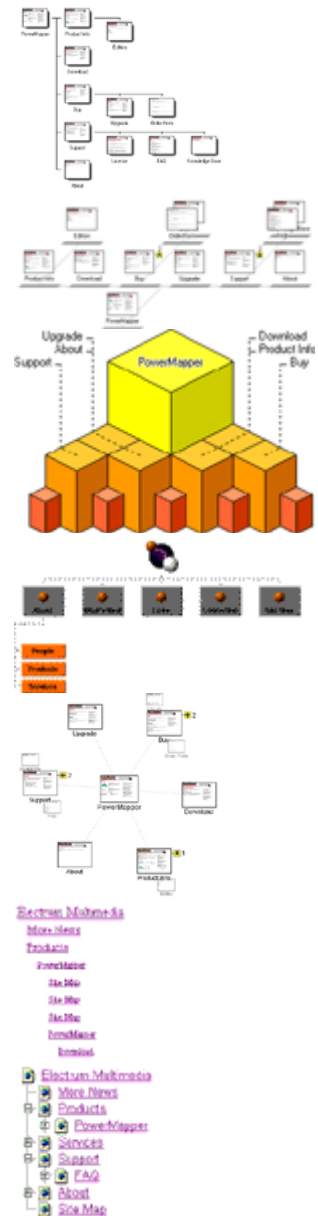
3D Buttons

Page Cloud

Table of Contents

Tree View

Sample





PowerMapper

one-click site mapping

Editions

PowerMapper is available in two editions:

- Standard Edition for web developers
- Professional Edition for enterprises and consultancies

Pricing

For current pricing see www.powermapper.com/buy

Support

Email and phone support is free of charge for 30 days after purchase. Optional 12/24 month support and maintenance contracts are available.

System Requirements

Windows Vista or later
Mac OS X 10.9 or later
1 GB RAM
20 MB free disk space



PowerMapper Software

PowerMapper Software is a UK-based software company specializing in web site analysis products. The company's first product, PowerMapper, was launched in 1997.

PowerMapper Software products are used by over 30% of the Fortune 100, and customers include Boeing, NASA, Bank of America, Dell and Microsoft.

For More Information

You can find out more at www.powermapper.com

	Pro	Std
Map Styles	13	7
3D Buttons	•	•
Electrum	•	•
Isometric	•	•
Page Cloud	•	•
Skyscrapers	•	•
Table of Contents	•	•
Tree View	•	•
Electrum 2.0	•	
Slickmap	•	
Table Map	•	
Thumb Tree	•	
Tree View 2.0	•	
Yehaa	•	
Map Multiple Servers	•	•
Map sites spanning multiple servers.		
Export	•	•
Export to Excel CSV and Google sitemap XML.		
Data Visualization	•	
Import data from sources like analytics and graph this on site maps.		
Site Planning and Architecture	•	
Visually experiment and communicate changes to site structure.		
Printable Map Styles	•	
New thumbnail styles show everything on a single map and large allow maps to be printed and taped together on a wall.		