

Enterprise User Manual

Enterprise User Manual	1
Overview	2
Introduction to SortSite	2
How SortSite Works	2
Checkpoints	3
Errors	3
Spell Checker	3
Accessibility	3
Browser Compatibility	3
Privacy	4
Search Optimization	4
Web Standards	4
Usability	4
Scanning Sites, Folders and Pages	5
Scanning Options	5
Choosing Rules	5
Scheduling and Emailing Reports	5
Report Visibility	6
Blocking Pages	6
Setting Report Limits	6
Controlling Link Following	7
Deleting Scans	7
Using Reports	8
Dashboard	8
Site Map	8
Issues by Category	9
Source View	9
Inventory	9
Issues by Page	10
Exporting Reports	10
Account Management	11
Manage Billing	11
Manage Users	11
My Settings	11
Change Password	11
Password Reset	11

SortSite

one-click site testing

Overview

This manual describes how to use the SortSite Enterprise web application.

Introduction to SortSite

SortSite is a web site testing tool that runs hundreds of quality checkpoints on each page of a web site.

It produces easy to read reports that drill down from a high level dashboard to the exact location of each problem.



Category	Benchmark against sites
Overall Quality	24 pages with quality issues
Errors	17 pages with broken links or other errors
Accessibility	20 pages with accessibility problems
Compatibility	14 pages with browser specific issues
Errors	0 pages with proxy issues
Search	20 pages with search engine issues
Standards	9 pages have W3C standards issues
Usability	10 pages with usability issues
Totals	64 pages and files checked

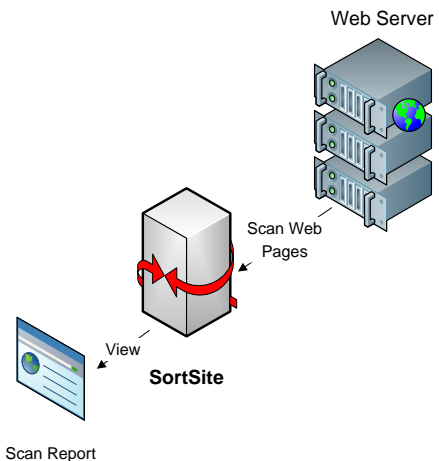
Example SortSite Report

How SortSite Works

SortSite scans each page of a site by running checkpoints, and then examines the page for links to un-scanned pages. It then scans the newly found pages and repeats this process until all pages have been scanned.

Pages are requested from the web server in the same way that a web

browser requests them. This means the product works with server technologies like ASP.NET, JSP, ColdFusion and SharePoint.



This process is called web crawling, and is used by search engine agents like Googlebot to find pages to index. Like other well-behaved web crawlers, SortSite obeys the Robots Exclusion Protocol (robots.txt) which describes areas of sites that are off limits to web crawlers.

In addition, you can add URL patterns to ignore:

- *.pdf – to ignore all PDF files
- *logout* - to ignore all URLs containing 'logout'

For more information see the section "Blocking Pages" below.

Checkpoints

Each page is scanned for over 700 quality checkpoints.

Each page is checked for quality issues using over 700 checkpoints. Checkpoints are grouped into guidelines (e.g. Google Webmaster Guidelines or Section 508 Accessibility Guidelines) which can be enabled or disabled as a group. Individual checkpoints can also be enabled or disabled. This is often done when issues are triggered by code that can't be changed (e.g. third party components).

Errors

Check for over 40 major functional problems including:

- Broken links and anchors in HTML, CSS, Flash, PDF and Office documents
- Missing or corrupt images
- Server configuration issues like inconsistent MIME types and character set encodings
- Script errors
- Domains about to expire
- SSL certificate problems
- Placeholder text like "Lorem Ipsum" and "TODO"
- Empty pages
- Page code and content larger than a specified size (page weight)
- Pages containing specified text (e.g. inappropriate language, competitor brand names)
- Pages missing required text (e.g. disclaimers or analytics tags)

Spell Checker

Check for spelling mistakes in English and French. See the Choosing Rules section on how to set the spelling language.

Accessibility

Check that disabled users can access your site using national and international accessibility standards:

- W3C WCAG 2 Levels A, AA, AAA

- W3C WCAG 1 Levels A, AA, AAA
- US Federal Section 508

Checkpoints include:

- Missing and placeholder ALT tags
- Links only accessible via Flash movies
- Poor text contrast
- Animated images and sounds that cannot be paused
- Pages without structural markup
- Elements that behave unexpectedly when the keyboard is used for navigation

Browser Compatibility

No major browser provides a full implementation of W3C standards. Check your HTML, CSS, JavaScript and images work with desktop and mobile browsers:

- Internet Explorer
- Firefox
- Safari
- Opera
- Google Chrome

Check for over 150 issues including:

- Use of HTML tags and attributes not supported by all browsers
- Use of CSS rules not supported by all browsers (Internet Explorer in particular has patchy CSS support)

- JavaScript and DOM properties and methods that trigger bugs or aren't implemented (e.g. in Firefox window.opener.closed returns random values after a window is closed)
- Images that don't display in some browsers (e.g. PNG files that are 4097 or 4098 bytes in length don't display in IE6 and BMP files only display in Windows browsers)

Privacy

Check for privacy issues including:

- Use of cookies or tracking images without privacy statements

Search Optimization

Check against search engine guidelines and best practices:

- Google Search Guidelines
- Yahoo Search Guidelines
- Bing Search Guidelines
- Best Practice Keyword Optimization

Check for over 60 issues including:

- Duplicate and missing page titles
- Dynamic pages with too many URL parameters to index
- Pages with hidden text which can trigger ranking penalties
- Presence of specified keywords in critical areas like page titles and headings

Web Standards

Validate code using the same integrated HTML validation engine as the W3C validation service:

- HTML, XHTML, CSS and SVG validation
- Find markup deprecated by W3C

Supported W3C standards include:

- HTML 2.0
- HTML 3.2
- HTML 4.0
- HTML 4.01
- HTML 5.0
- ISO HTML 15445:2000
- MathML 2.0
- MathML 3.0
- XHTML 1.0
- XHTML 1.1
- SVG 1.0
- SVG 1.1
- SVG Basic 1.1
- SVG Tiny 1.1
- SMIL 1.0
- SMIL 2.0
- SMIL 2.1
- SMIL 3.0

Usability

Check against usability standards:

- Usability.gov guidelines
- W3C best practices
- Readability guidelines

Check for over 50 user experience problems including:

- Slow loading pages
- Use of Windows or Mac specific fonts
- Pages with no navigation options
- Pages requiring university level reading skills
- Displaying unsolicited popup windows
- Pages with default titles like "Untitled-1"
- Using underlined text which looks like a link
- Forms that require shifting from keyboard to mouse to complete
- Long URLs which wrap onto two lines when emailed
- Images that cause the page to jump about while loading

Scanning Sites, Folders and Pages

To scan a site:

- 1) Login to the web application (login link at top of every page on powermapper.com)
- 2) Type the address of the site you want to scan
- 3) Click the **Scan** button



A scan request is sent to the SortSite Enterprise servers, which scan each page of the site in turn and display a report once it's done.

Scanning Options

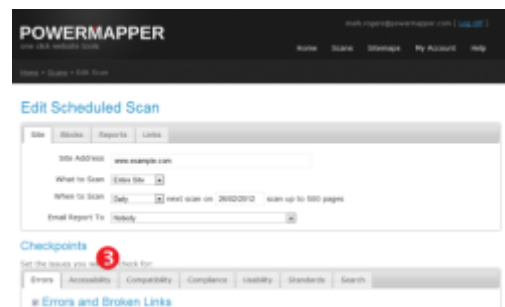
The dropdown box to the left of the Scan button displays a menu that lets you choose the scope of the scan:

- Site – the entire site (apart from any blocked links)
- Folder – scan pages in the same folder (starting the scan at www.example.com/folder/page.htm scans pages with addresses starting www.example.com/folder)
- Page – check a single page only (links are not checked)
- Page and Links – check a single page and broken links
- Upload HTML - upload an HTML file to scan

Choosing Rules

Once the a site has been scanned, you can change the checkpoints tested on each page:

- 1) Click the **Scans** link on the navigation bar at the top of the screen.
- 2) Click the **Edit Rules and Schedule** link next to the scan you want to modify.
- 3) Modify the rule settings then click the **Save** button at the bottom of the page.



Note: changes saved here become the default settings for any new scans created (but don't affect existing scans, other than the one being edited).

Scheduling and Emailing Reports

The Edit Scan page also allows you schedule regular scans (daily, weekly, monthly) and email reports to one of the registered users (see Managing Users below). The options are:

- Site Address – the URL of the site/folder/page being scanned
- What to Scan – site/folder/page (see Scanning Options above)
- When to Scan – when to run scheduled scans
- Email Report To – who to email scheduled scan results to

Report Visibility

You can control whether a scan reports and settings can be seen by other team members, or are only visible to you.

Blocking Pages

Adding entries to the Blocked Links box allows you to stop pages being visited during the scan.

Blocked Links

Allows you to specify URL patterns for pages to block. The syntax is the same as used in robots.txt. Examples:

<code>http://www.domain.com/copyright.htm</code>	Blocks a single page
<code>http://www.domain.com/stayout/*</code>	Blocks all pages in the stayout folder
<code>https:*</code>	Blocks all HTTPS links
<code>*.doc</code>	Blocks links to all pages with a .doc extension
<code>*print_friendly.htm</code>	Blocks links to URLs ending in print_friendly.htm
<code>*action=edit*</code>	Blocks links containing action=edit

Note: if the target site has a robots.txt file, then any pages blocked by the robots.txt file are always blocked (blocked links will be reported as an information message on the Errors tab of the report).

Setting Report Limits

Allows you to specify settings control how many issues are reported.

Maximum pages shown per issue

The maximum number of pages each issue is reported on in detail. This reduces noise from issues in page templates that affect every page of a site.

Maximum line numbers shown per issue

The number of lines per page an issue is reported on. This reduces noise from issues like unescaped `&` characters that can occur on nearly every line of every page of a site.

Checking links to other sites

Either unlimited, or the number of outbound links checked per external site. Useful if a site has social bookmarking links on every page (checking lots of these slows scans down).

Controlling Link Following

Allows you to control which links are followed during the scan.

JavaScript and Flash Links

Lets you choose whether links in JavaScript and Flash are followed. For example,

```
function GoTo()
{
    // the URL "bigframe1.htm" is
    // extracted from this JavaScript code
    parent.bigframe.location.href = "bigframe1.htm";
}
```

Follow links to related domains

When checked the scanner will follow links to child domains (e.g. if you scan domain.com then links to store.domain.com and www.domain.com will be followed) and sibling domains at the same level (e.g. if you scan www.domain.com then links to secure.domain.com and www2.domain.com will be followed).

Follow links to additional domains

Links to any additional domains listed in this box will be followed.

Deleting Scans

Old scan reports are automatically deleted after a fixed period to conserve disk space:

- Scheduled scans run monthly are deleted after 12 months.
- Scheduled scans run weekly are deleted after 12 weeks.
- Scheduled scans run daily are deleted after 12 days.
- Scans run via Quick Scan are deleted after 10 days.

If you want to manually delete a scan or scan history use the Delete Scan link. This gives the following options:

- Delete scan reports, except most recent one
Deletes all but the most recent scan report for this url, but keeps scan schedule and settings
- Delete all scan reports
Deletes all scan reports for this url, but keeps scan schedule and settings
- Delete url, scan settings and reports
Deletes everything for this URL, and the URL no longer appears in the Scans list

Using Reports

Reports are broken down into a number of tabs and sub-tabs:

- Summary
 - Dashboard overview of site issues
 - Site Map shows distribution of issues across site
 - What was Tested summary of what was tested
- Issues
 - Errors technical errors such as broken links
 - Accessibility WCAG and Section 508 accessibility
 - Compatibility browser compatibility issues
 - Compliance legal compliance problems
 - Search search engine guidelines & best practice
 - Standards W3 validation and technical standards
 - Usability usability issues
- Pages
 - Inventory inventory of pages, images, scripts etc.
 - Issues by Page issues grouped by page

Dashboard

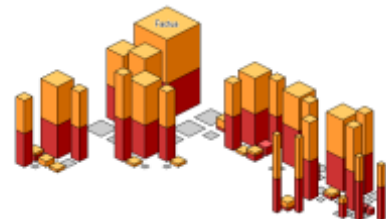
Overview of site issues; issue count over time; and benchmarks against similar sites.

Issues are divided into categories: errors; accessibility; browser compatibility; legal compliance; search guidelines; standards and usability. Clicking on a category title drills down to the Issues by Category report.




Site Map

The bars shows error counts for each page, allowing you to locate low-quality areas of the site. Clicking on a bar shows the Source View for the associated page.



Issues by Category

The issues tabs show a list of issues for a single category (e.g. accessibility) with a summary of standards compliance status.

Clicking the  expansion button next to each issue shows URLs of affected pages. Clicking a URL displays the Source View for the URL.

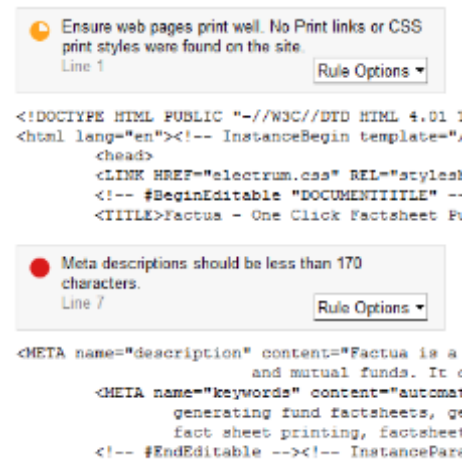


Source View

This view displays the source code of the file (HTML, CSS or JavaScript) with issues and errors shown alongside the line of code that caused them.


This view also shows a summary of page attributes: MIME type; last modified date; download time; size; list of links in and out; list of images, script files and CSS files.

Note: Line numbers refer to the line in the HTML page served by the web server, which may not correspond to line numbers used in server-side scripts like PHP, ASP.NET and JSP.



Inventory

List of pages and content on site broken down by type and technology.


Clicking the  expansion button next to each file type shows a list of URLs of that type.

Clicking on URLs in the inventory displays the Source View for each URL.

Pages	URLs	Resource Type
HTML	45 pages	HTML pages
ASP	0 pages	Classic ASP dynamic pages
ASPX	0 pages	ASP.NET dynamic pages
PHP	0 pages	PHP dynamic pages
Ruby	0 pages	Ruby dynamic pages
Other	0 pages	Other dynamic pages
Images	URLs	Resource Type
GIF	33 images	GIF images
PNG	0 images	PNG images
JPEG	3 images	JPEG images
image/peg	http://www.factua.com/factsheets/images/euro.jpg	
image/peg	http://www.factua.com/factsheets/images/image001.jpg	
image/peg	http://www.factua.com/images/map.jpg	
Other	0 images	Other image types

Issues by Page

List of issues broken down by page. Each issue shows a list of affected pages.

Clicking the  expansion button next to each URL shows issues for that page. Clicking a URL displays the Source View for the URL.

Issues	URL / Description
30	http://www.factua.com/
26	http://www.factua.com/products/index.htm
28	http://www.factua.com/products/see/
29	http://www.factua.com/products/ime/
3	http://www.factua.com/products/datasheet.htm
30	http://www.factua.com/products/demo.htm
2	http://www.factua.com/factsheets/rock.pdf
	● Use the LANG attribute to identify the language of the page.
	● PDFs must be tagged to be accessible by screen readers.

Exporting Reports

Reports can be exported using the Export command on the File menu. Supported formats include:

- Full Report (Word RTF)
RTF version of report that can be opened in any word processor
- Inventory Report (Excel CSV)
List of pages / images / files found by scan
- Issue Report (Excel CSV)
List of issues that can be opened by any spreadsheet
- Link Report (Excel CSV)
List of broken links that can be opened by any spreadsheet

Account Management

Manage Billing

For credit card customers, shows the most recent invoice and provides a login link to the billing management system which provides:

- Cancellations, downgrades and upgrades
- Changing credit card details
- Charge history

Note: customers who have purchased through a reseller should contact their reseller for billing changes and queries.

Manage Users

Allows an administrator to manage users:

- Add new users (up to your plan maximum)
- Change email addresses and permissions
- Disable or delete users

My Settings

Allows the currently logged in user to set date and time formats displayed in the user interface.

Change Password

Allows the currently logged in user to change their password.

Password Reset

Available from the login page. Allows a user with an active account to securely reset their password by sending a reset link to their email address.